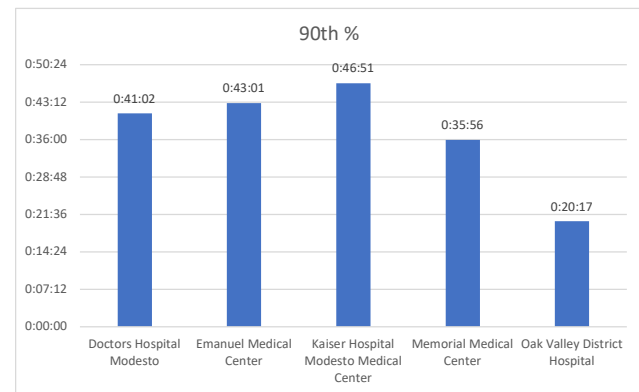
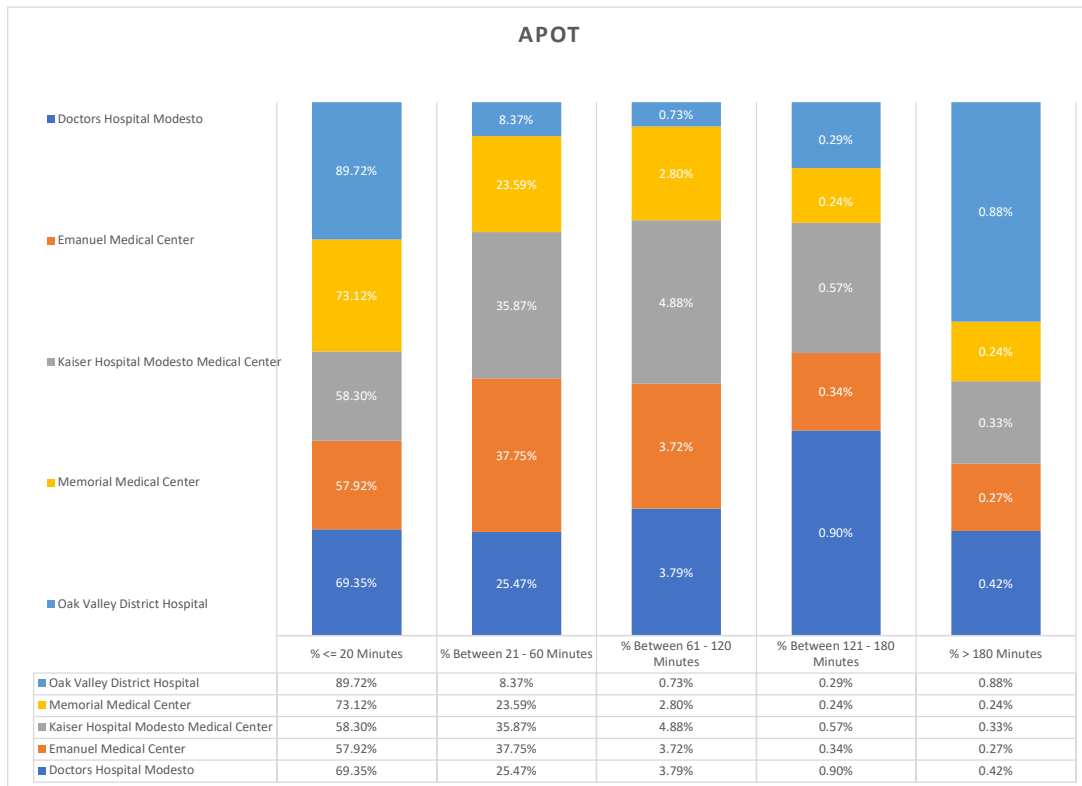
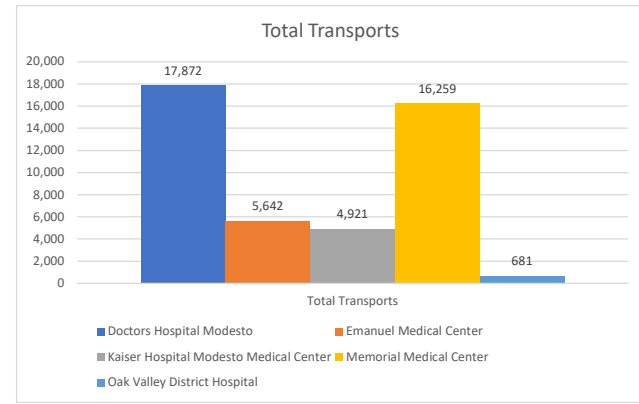


Stanislaus OES APOT
 Date Range: 01/01/2022 to 11/30/2022
 Provider(s): AMR, Patterson, Oak Valley, Westside

Destination	90th %	Total Transports	Total <= 20 Minutes	% <= 20 Minutes	Total Between 21 - 60 Minutes	% Between 21 - 60 Minutes	Total Between 61 - 120 Minutes	% Between 61 - 120 Minutes	Total Between 121 - 180 Minutes	% Between 121 - 180 Minutes	Total > 180 minutes	% > 180 Minutes
Doctors Hospital Modesto	0:41:02	17,872	12,395	69.35%	4,552	25.47%	677	3.79%	160	0.90%	75	0.42%
Emanuel Medical Center	0:43:01	5,642	3,268	57.92%	2,130	37.75%	210	3.72%	19	0.34%	15	0.27%
Kaiser Hospital Modesto Medical Center	0:46:51	4,921	2,869	58.30%	1,765	35.87%	240	4.88%	28	0.57%	16	0.33%
Memorial Medical Center	0:35:56	16,259	11,888	73.12%	3,836	23.59%	456	2.80%	39	0.24%	39	0.24%
Oak Valley District Hospital	0:20:17	681	611	89.72%	57	8.37%	5	0.73%	2	0.29%	6	0.88%
Stanislaus OES Totals	0:39:47	45,375	31,031	68.39%	12,340	27.20%	1,588	3.50%	248	0.55%	151	0.33%



● 90th % is the response time for 9 out of 10 calls.