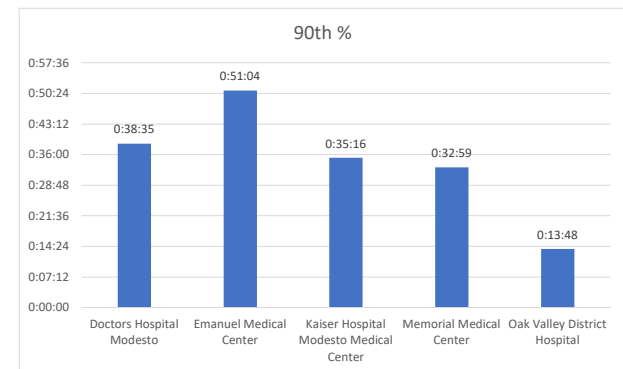
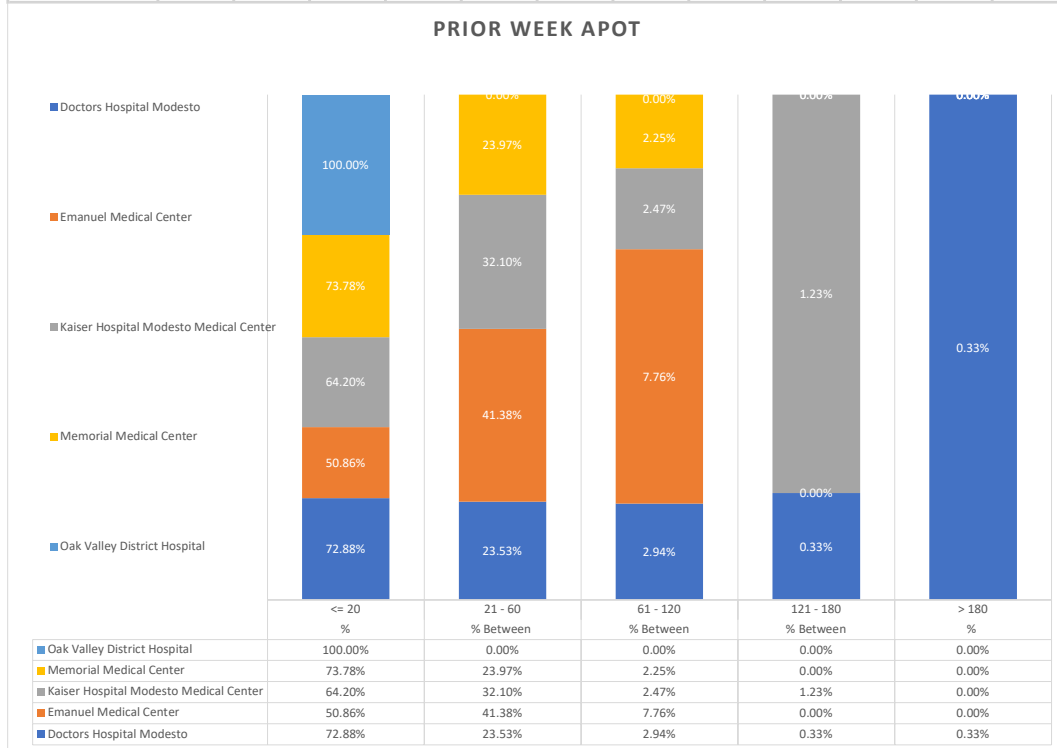
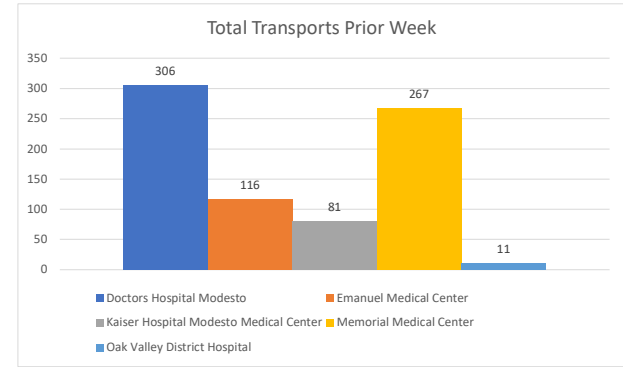


**Stanislaus OES APOT**  
 Date Range:10/23/2022 to 10/29/2022  
 Provider(s): AMR, Patterson, Oak Valley, Westside

Destination	90th %	Total Transports	Total ≤ 20	% ≤ 20	Total Between 21 - 60	% Between 21 - 60	Total Between 61 - 120	% Between 61 - 120	Total Between 121 - 180	% Between 121 - 180	Total > 180	% > 180
<a href="#">Doctors Hospital Modesto</a>	0:38:35	306	223	72.88%	72	23.53%	9	2.94%	1	0.33%	1	0.33%
<a href="#">Emanuel Medical Center</a>	0:51:04	116	59	50.86%	48	41.38%	9	7.76%	0	0.00%	0	0.00%
<a href="#">Kaiser Hospital Modesto Medical Center</a>	0:35:16	81	52	64.20%	26	32.10%	2	2.47%	1	1.23%	0	0.00%
<a href="#">Memorial Medical Center</a>	0:32:59	267	197	73.78%	64	23.97%	6	2.25%	0	0.00%	0	0.00%
<a href="#">Oak Valley District Hospital</a>	0:13:48	11	11	100.00%	0	0.00%	0	0.00%	0	0.00%	0	0.00%
<b>Stanislaus OES Total</b>	<b>0:39:00</b>	<b>781</b>	<b>542</b>	<b>69.40%</b>	<b>210</b>	<b>26.89%</b>	<b>26</b>	<b>3.33%</b>	<b>2</b>	<b>0.26%</b>	<b>1</b>	<b>0.13%</b>



● 90th % is the response time for 9 out of 10 calls.