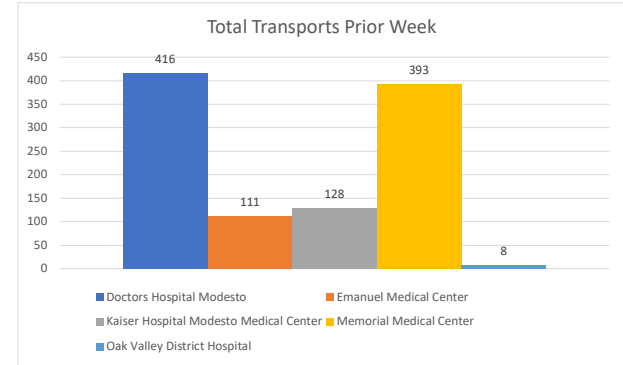
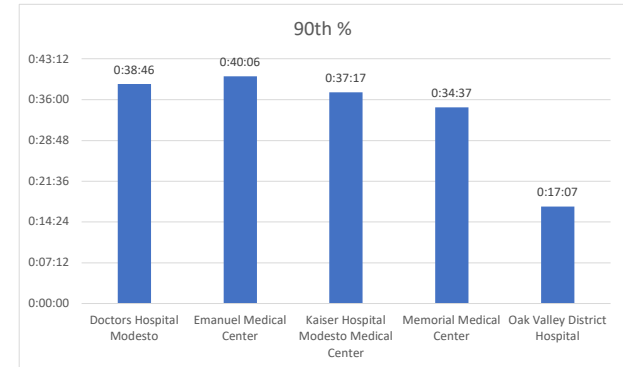
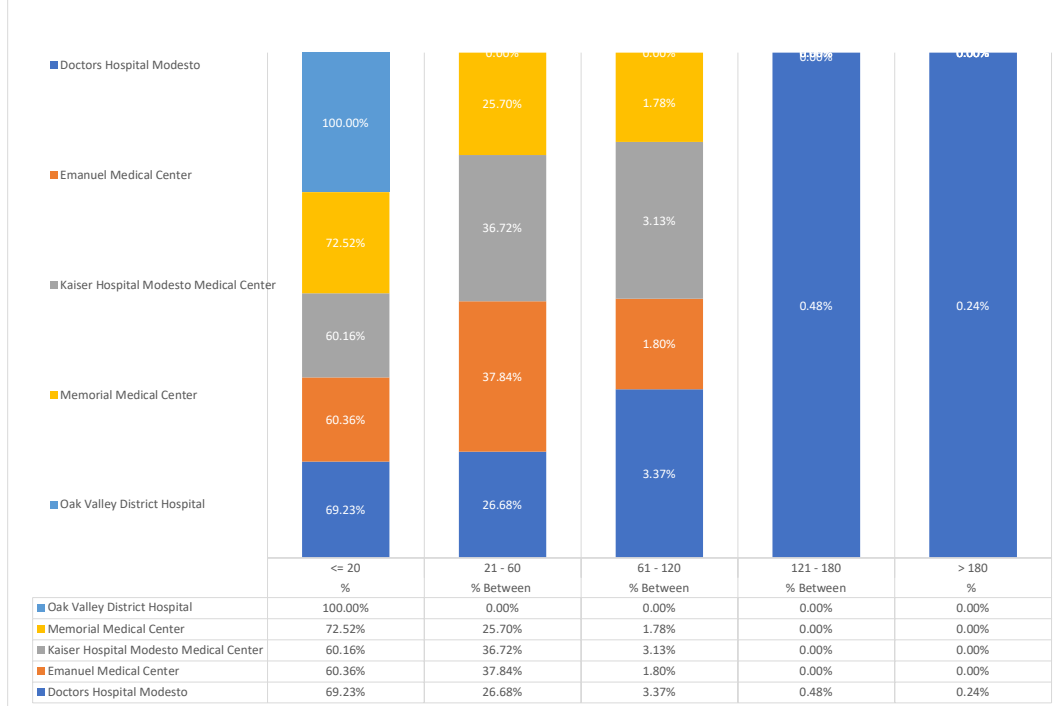


Stanislaus OES APOT
 Date Range:08/21/2022 to 08/27/2022
 Provider(s): AMR, Patterson, Oak Valley, Westside

| Destination | 90th % | Total Transports | Total ≤ 20 | % ≤ 20 | Total Between 21 - 60 | % Between 21 - 60 | Total Between 61 - 120 | % Between 61 - 120 | Total Between 121 - 180 | % Between 121 - 180 | Total > 180 | % > 180 |
|--|----------------|------------------|---------------|---------------|-----------------------------|----------------------|------------------------------|-----------------------|-------------------------------|------------------------|----------------|--------------|
| Doctors Hospital Modesto | 0:38:46 | 416 | 288 | 69.23% | 111 | 26.68% | 14 | 3.37% | 2 | 0.48% | 1 | 0.24% |
| Emanuel Medical Center | 0:40:06 | 111 | 67 | 60.36% | 42 | 37.84% | 2 | 1.80% | 0 | 0.00% | 0 | 0.00% |
| Kaiser Hospital Modesto Medical Center | 0:37:17 | 128 | 77 | 60.16% | 47 | 36.72% | 4 | 3.13% | 0 | 0.00% | 0 | 0.00% |
| Memorial Medical Center | 0:34:37 | 393 | 285 | 72.52% | 101 | 25.70% | 7 | 1.78% | 0 | 0.00% | 0 | 0.00% |
| Oak Valley District Hospital | 0:17:07 | 8 | 8 | 100.00% | 0 | 0.00% | 0 | 0.00% | 0 | 0.00% | 0 | 0.00% |
| Stanislaus OES Total | 0:35:59 | 1,056 | 725 | 68.66% | 301 | 28.50% | 27 | 2.56% | 2 | 0.19% | 1 | 0.09% |



PRIOR WEEK APOT



● 90th % is the response time for 9 out of 10 calls.