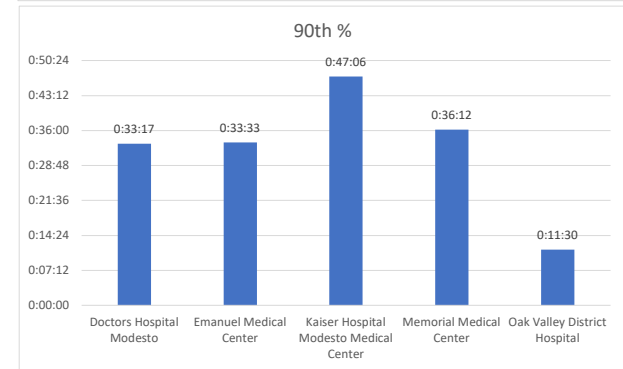
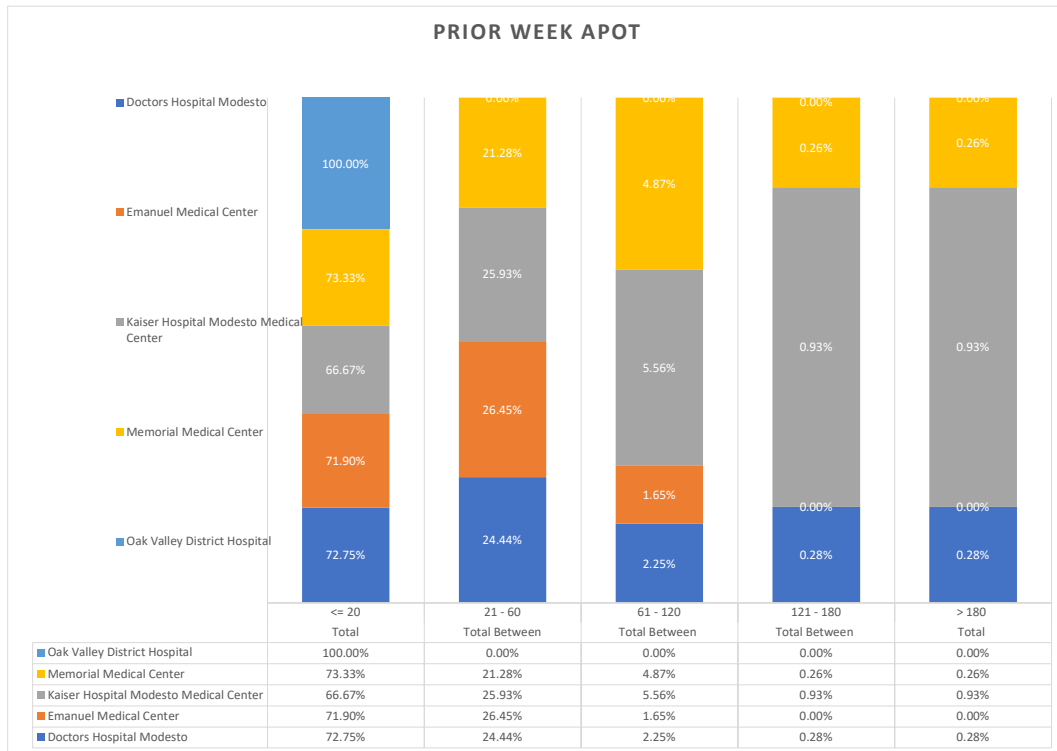
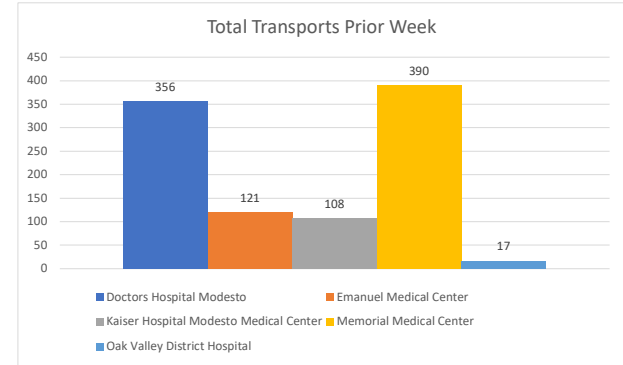


Stanislaus OES APOT
 Date Range:08/07/2022 to 08/13/2022
 Provider(s): AMR, Patterson, Oak Valley, Westside

Destination	90th %	Total Transports	Total <= 20	% <= 20	Total Between 21 - 60	% Between 21 - 60	Total Between 61 - 120	% Between 61 - 120	Total Between 121 - 180	% Between 121 - 180	Total > 180	% > 180
Doctors Hospital Modesto	0:33:17	356	259	72.75%	87	24.44%	8	2.25%	1	0.28%	1	0.28%
Emanuel Medical Center	0:33:33	121	87	71.90%	32	26.45%	2	1.65%	0	0.00%	0	0.00%
Kaiser Hospital Modesto Medical Center	0:47:06	108	72	66.67%	28	25.93%	6	5.56%	1	0.93%	1	0.93%
Memorial Medical Center	0:36:12	390	286	73.33%	83	21.28%	19	4.87%	1	0.26%	1	0.26%
Oak Valley District Hospital	0:11:30	17	17	100.00%	0	0.00%	0	0.00%	0	0.00%	0	0.00%



● 90th % is the response time for 9 out of 10 calls.