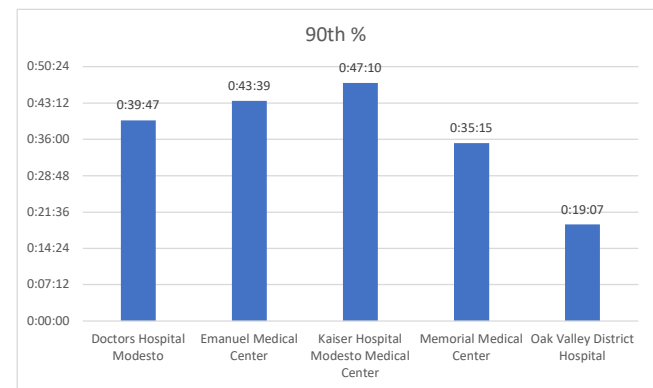
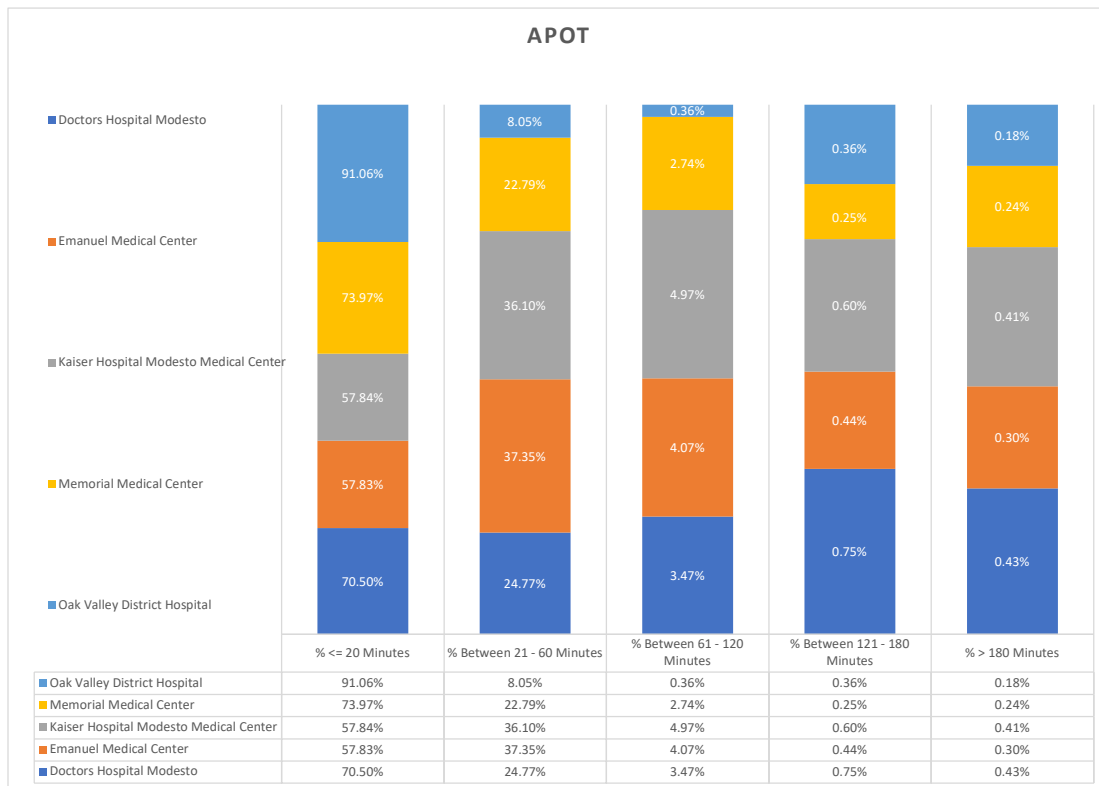
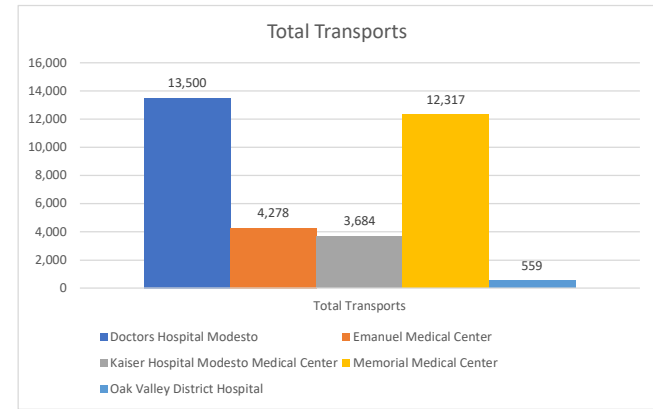


Stanislaus OES APOT

Date Range: 01/01/2022 to 08/31/2022

Provider(s): AMR, Patterson, Oak Valley, Westside

Destination	90th %	Total Transports	Total <= 20 Minutes	% <= 20 Minutes	Total Between 21 - 60 Minutes	% Between 21 - 60 Minutes	Total Between 61 - 120 Minutes	% Between 61 - 120 Minutes	Total Between 121 - 180 Minutes	% Between 121 - 180 Minutes	Total > 180 minutes	% > 180 Minutes
Doctors Hospital Modesto	0:39:47	13,500	9,518	70.50%	3,344	24.77%	469	3.47%	101	0.75%	58	0.43%
Emanuel Medical Center	0:43:39	4,278	2,474	57.83%	1,598	37.35%	174	4.07%	19	0.44%	13	0.30%
Kaiser Hospital Modesto Medical Center	0:47:10	3,684	2,131	57.84%	1,330	36.10%	183	4.97%	22	0.60%	15	0.41%
Memorial Medical Center	0:35:15	12,317	9,111	73.97%	2,807	22.79%	337	2.74%	31	0.25%	30	0.24%
Oak Valley District Hospital	0:19:07	559	509	91.06%	45	8.05%	2	0.36%	2	0.36%	1	0.18%
Stanislaus OES Totals	0:39:14	34,338	23,743	69.14%	9,124	26.57%	1,165	3.39%	175	0.51%	117	0.34%



● 90th % is the response time for 9 out of 10 calls.