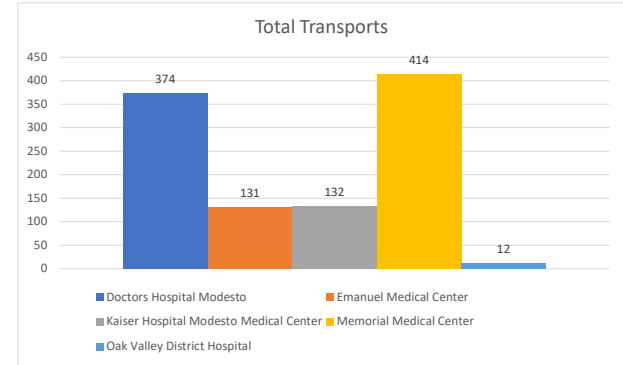
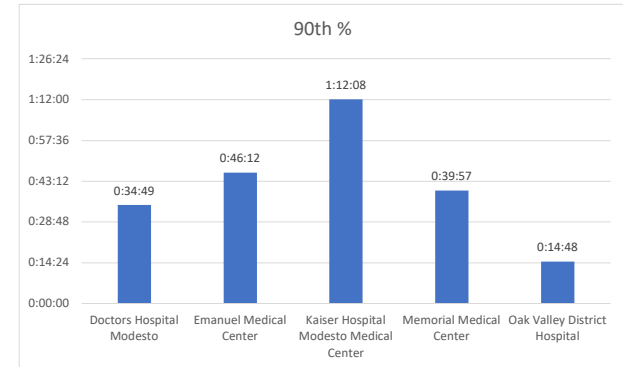
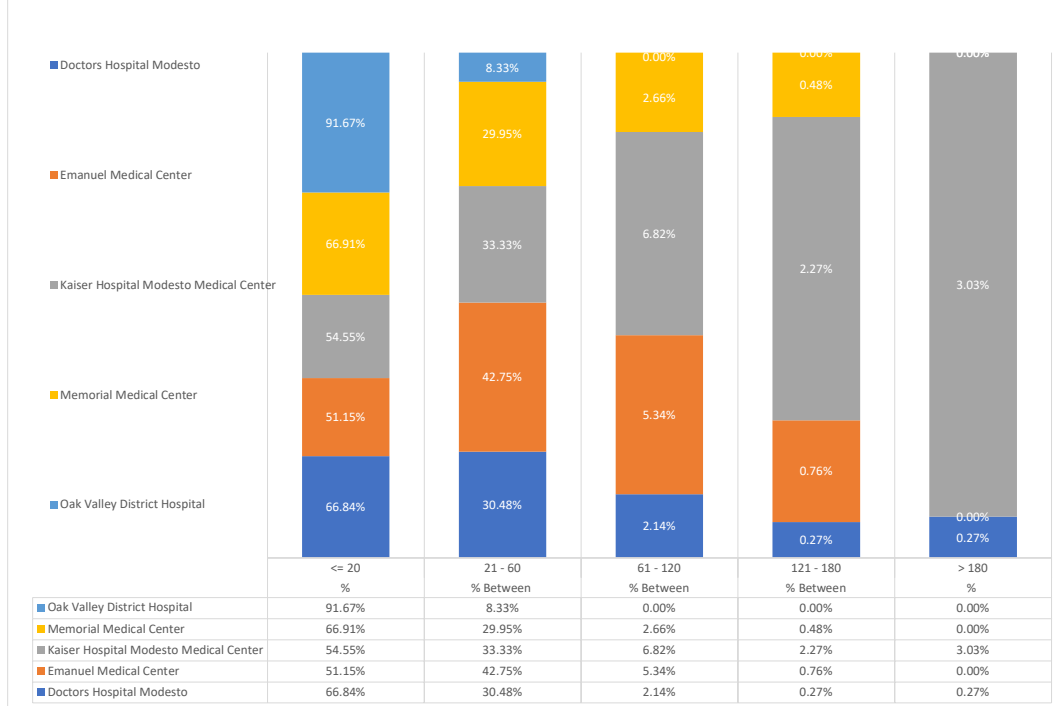


Stanislaus OES APOT
 Date Range:12/25/2022 to 12/31/2022
 Provider(s): AMR, Patterson, Oak Valley, Westside

Destination	90th %	Total Transports	Total <= 20	% <= 20	Total Between 21 - 60	% Between 21 - 60	Total Between 61 - 120	% Between 61 - 120	Total Between 121 - 180	% Between 121 - 180	Total > 180	% > 180
Doctors Hospital Modesto	0:34:49	374	250	66.84%	114	30.48%	8	2.14%	1	0.27%	1	0.27%
Emanuel Medical Center	0:46:12	131	67	51.15%	56	42.75%	7	5.34%	1	0.76%	0	0.00%
Kaiser Hospital Modesto Medical Center	1:12:08	132	72	54.55%	44	33.33%	9	6.82%	3	2.27%	4	3.03%
Memorial Medical Center	0:39:57	414	277	66.91%	124	29.95%	11	2.66%	2	0.48%	0	0.00%
Oak Valley District Hospital	0:14:48	12	11	91.67%	1	8.33%	0	0.00%	0	0.00%	0	0.00%
Stanislaus OES Total	0:41:54	1,063	677	63.69%	339	31.89%	35	3.29%	7	0.66%	5	0.47%



WEEK APOT



● 90th % is the response time for 9 out of 10 calls.