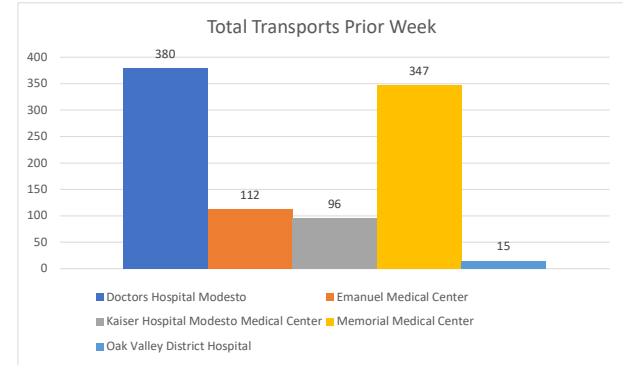
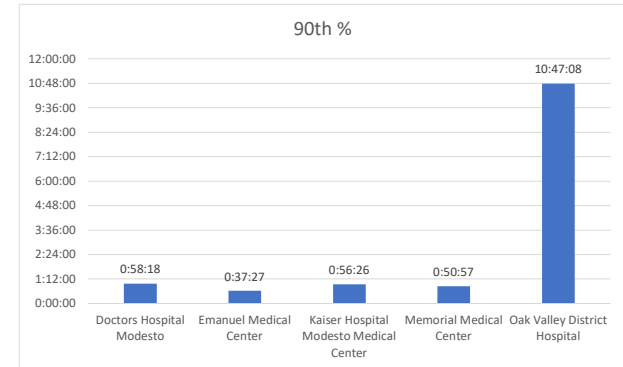
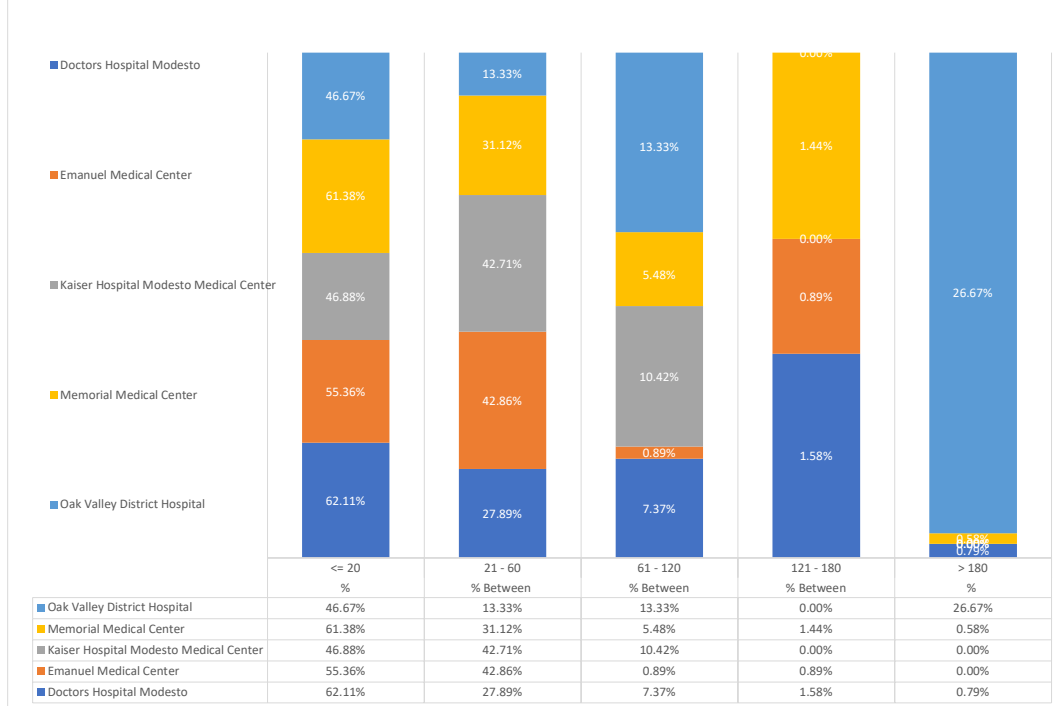


**Stanislaus OES APOT**  
 Date Range: 11/27/2022 to 12/3/2022  
 Provider(s): AMR, Patterson, Oak Valley, Westside

Destination	90th %	Total Transports	Total ≤ 20	% ≤ 20	Total Between 21 - 60	% Between 21 - 60	Total Between 61 - 120	% Between 61 - 120	Total Between 121 - 180	% Between 121 - 180	Total > 180	% > 180
<a href="#">Doctors Hospital Modesto</a>	0:58:18	380	236	62.11%	106	27.89%	28	7.37%	6	1.58%	3	0.79%
<a href="#">Emanuel Medical Center</a>	0:37:27	112	62	55.36%	48	42.86%	1	0.89%	1	0.89%	0	0.00%
<a href="#">Kaiser Hospital Modesto Medical Center</a>	0:56:26	96	45	46.88%	41	42.71%	10	10.42%	0	0.00%	0	0.00%
<a href="#">Memorial Medical Center</a>	0:50:57	347	213	61.38%	108	31.12%	19	5.48%	5	1.44%	2	0.58%
<a href="#">Oak Valley District Hospital</a>	10:47:08	15	7	46.67%	2	13.33%	2	13.33%	0	0.00%	4	26.67%
<b>Stanislaus OES Total</b>	0:51:12	950	563	59.26%	305	32.11%	60	6.32%	12	1.26%	9	0.95%



**PRIOR WEEK APOT**



● 90th % is the response time for 9 out of 10 calls.