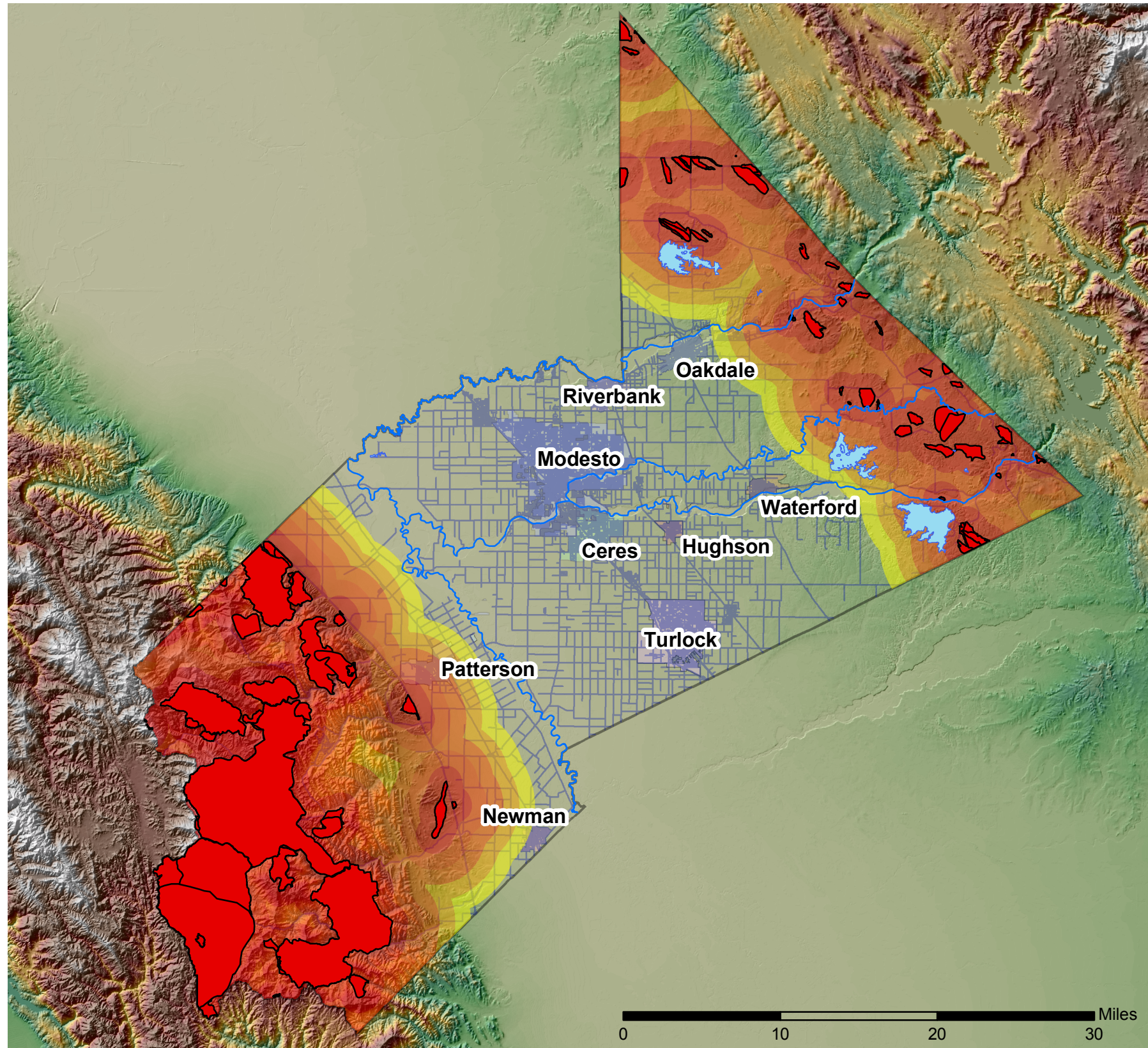


2010 Stanislaus County -- Historical Wildfire Hazard

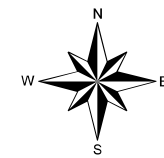


Map Legend:

- Lakes
- Rivers
- Roads
- Historical Burn Areas

Distance From Actual Wildfires

- < 1 Mile
- < 2 Miles
- < 3 Miles
- < 4 Miles
- < 5 Miles



Map displays Stanislaus County Historical Wildfire Areas with proximity zones radiating out five miles.

Prepared by:
Stanislaus County
Public Works - GIS
November, 2009