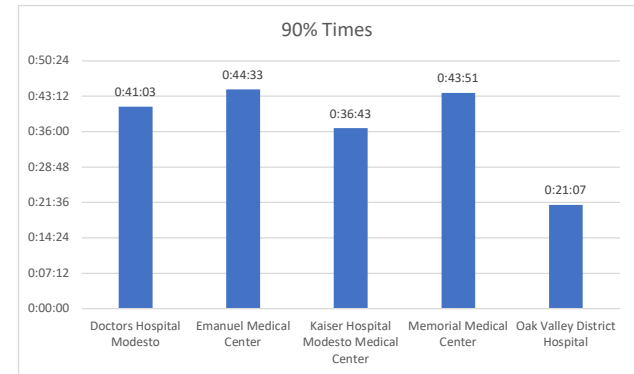
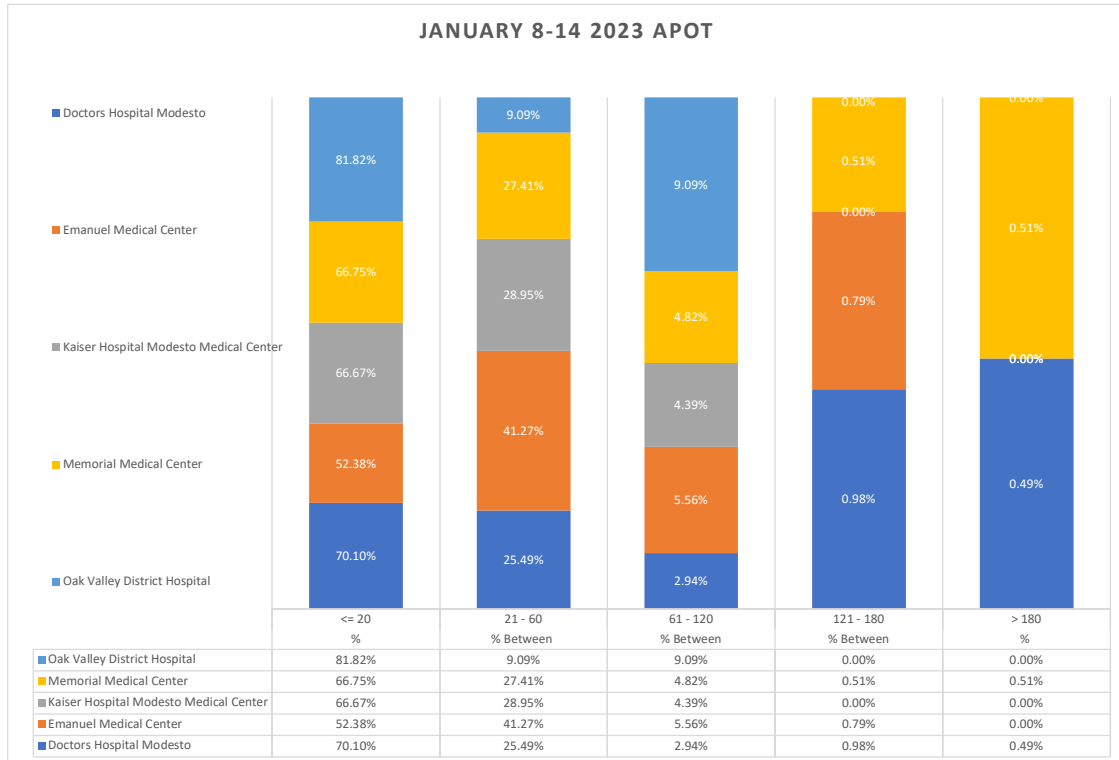
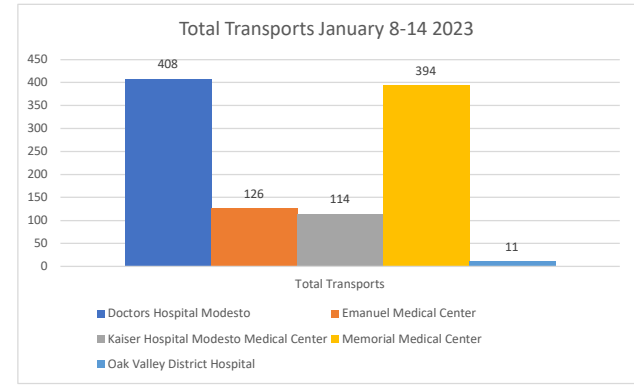


Stanislaus OES APOT

Date Range: 01/08/2023 to 1/14/2023

Provider(s): AMR, Patterson, Oak Valley, Westside

Destination	90th %	Total Transports	Total <= 20	% <= 20	Total Between 21 - 60	% Between 21 - 60	Total Between 61 - 120	% Between 61 - 120	Total Between 121 - 180	% Between 121 - 180	Total > 180	% > 180
Doctors Hospital Modesto	0:41:03	408	286	70.10%	104	25.49%	12	2.94%	4	0.98%	2	0.49%
Emanuel Medical Center	0:44:33	126	66	52.38%	52	41.27%	7	5.56%	1	0.79%	0	0.00%
Kaiser Hospital Modesto Medical Center	0:36:43	114	76	66.67%	33	28.95%	5	4.39%	0	0.00%	0	0.00%
Memorial Medical Center	0:43:51	394	263	66.75%	108	27.41%	19	4.82%	2	0.51%	2	0.51%
Oak Valley District Hospital	0:21:07	11	9	81.82%	1	9.09%	1	9.09%	0	0.00%	0	0.00%
Stanislaus OES Total	0:42:29	1,053	700	66.48%	298	28.30%	44	4.18%	7	0.66%	4	0.38%



● 90th % is the response time for 9 out of 10 calls.